



# NEWSLETTER

SEPTEMBER 2022 ISSUE 01



## A MESSAGE FROM THE PRINCIPAL

Dear Parents and Carers,

Welcome back to the new academic year and I hope you are all safe and well.

Firstly, thank you for your support in ensuring our pupils have returned to school looking incredibly smart, well equipped and ready to learn. Your support is greatly appreciated and these high standards will give our students the best possible chance of success in the future.

I would like to remind parents and carers that the uniform policy has not changed and we have always insisted on the highest standards of dress and appearance. Can I also ask for your co-operation in ensuring that piercings are not visible during the school day; this applies to children in all phases. The summer seems a distant memory now; we have started the autumn term very well and at a high pace. The behaviour and attitude to learning of pupils has been excellent and it is fantastic being able to see them all together at break and lunch. I am aware that some pupils, particularly in the secondary phase, are finding break and lunch busy. However, the lunch queues are quickly disappearing leaving plenty of time to eat and spend time outside with friends.

### Enrichment and Extra-Curricular Programme

Our enrichment programme has started across the phases with lots of opportunities to take part in a range of activities after school.

### Parking

You will have noticed that we are working with parents and carers to ensure the parking, especially in the taxi/disabled bays closest to the school, are safe for our most vulnerable children and I thank you for your cooperation in this matter. Please note these bays should only be used for the local authority taxi's that bring our resource base and SEND pupils to school and also those with a blue badge. We politely request that blue badge holders use the spaces available.

Additionally, we will be working with the local police and authority to have a drive on ensuring Latham Avenue and the surrounding roads are kept as clear as possible. The car park is open before and after school and there are usually spaces to park so your child(ren) can meet you in the car park or you can walk down to collect.

Please can I request that you do not park on the double yellow lines or obstruct the flow of traffic. Again, these requests are made to keep our children safe. The drop off /pick up bays on the left, as you drive into the car park, are to be used for dropping off pupils **only**. Can I politely request this area is not used for parking or short stay, it is for **drop off / pick up only**.

### Admissions for September 2023

I am pleased to inform you that the admissions round is open for September 2023 for both Reception and Year 7 children. Please remember, if your child(ren) attend our nursery they will automatically receive a place in our reception and if your child(ren) are in our primary phase they will transfer to the secondary phase; there is no need apply. Our Open Evening in on Thursday 22nd September 5pm -7:30pm.

Thank you for such a positive start to the new school year.

Mr G Kelly  
Interim Principal  
CEO



# ATTENDANCE



As we are now well into the Autumn Term, we want to remind all students and parents/carers about the need for regular attendance to school. Despite it being the second full week back at school we have had a small minority of students staying off school unnecessarily and with reasons that we are not able to authorise. We must remind all parents/carers that the The Department for Education (DfE) have confirmed that the following responsibilities have now resumed:

- Parents’ duty to ensure that their child attends regularly at school where the child is a registered pupil.
- Schools’ responsibilities to record attendance and follow up absence.
- The availability to issue sanctions, including fixed penalty notices in line with local authorities’ codes of conduct.

Our aim is to continue to support all students to come to school regularly by providing practical help and sensitivity where there are difficulties with students attending whatever the reason. Please can we remind parents/carers of the need for open communication, and if your child is unable to come to school it is vital that you telephone school and discuss the reason with us.

Each morning our Pastoral team will look at student absence and depending on the reason for the absence, then it is very likely you will receive a home visit from one of our Pastoral team.

## THE SCHOOL DAY

### PRIMARY

School starts	8.40am
Registration	8.40am – 8.50am
Period 1	8.50am - 9.50am
Break	9.50am - 10.05am
Period 2	10.05am - 11.05am
Period 3	11.05am - 12.50pm
Lunch	11.35am - 12.50pm
Period 4	12.50pm - 1.50pm
Period 5	1.50pm - 2.50pm
School ends	2.50pm

### SECONDARY

School starts	8.30am
Registration	8.30am - 8.50am
Period 1	8.50am - 9.50am
Period 2	9.50am - 10.50am
Break	10.50am - 11.05am
Period 3	11.05am - 12.05pm
Period 4	12.05pm - 1.05pm
Lunch	1.05pm - 1.35pm
Period 5	1.35pm - 2.35pm
School ends	2.35pm



### Student of the Week

**Alfie H – Year 7  
10/10 Best Effort**

He has been excellent in French this week, putting his own sentences together to make conversation with me in French.

**Olivia S – Year 8  
10/10 Best Effort**

Olivia engaged and worked really well in Food Tech to produce a delicious chicken curry. She tidied up well and gave 100% effort. Well done!

**Leon H – Year 7  
10/10 Best Effort**

Keen learner and book presentation is 10/10.

**Adam D – Year 9  
10/10 Best Effort**

I have selected Adam as my student of the week for the amount of effort and pride he put into his first art lesson this year. Thank you and well done!

**Cody H – Year 9  
Resilience**

Cody has made a really positive start in his science lessons, being resilient, working hard and contributing to class discussions and questioning. Well done Cody, keep it up!

**Curtis T – Year 10  
10/10 Best Effort**

Curtis always comes to my lessons with an excellent attitude to his work, giving his 10/10 best effort and is always keen to answer questions.

**Charlotte M – Year 10  
10/10 Best Effort**

Charlotte has had a great start to Y10. She has engaged in classroom discussions, reading and finished her work at home in order to catch up. Well done!

**Ellie M-H – Year 11  
Resilience**

Ellie was concerned about her MAP in science but she worked really hard throughout and showed great resilience. Well done Ellie!

**Lee S – Year 11  
10/10 Best Effort**

Lee has worked solidly all week and has put in the extra effort during his maths lessons using the extension tasks on most days. This shows his

**James M – Year 11  
10/10 Best Effort**

James has made a fantastic start to the year in English. He is writing detailed answers and producing work much more quickly than in Year 10. His behaviour has also been excellent. Well done, James!

## WORD OF THE WEEK

Each week, we look at a high-frequency, useful word (which may be difficult to interpret) and explore the definition, sounds, spelling, word-families, grammar and history surrounding it.

### How you can help:

Encourage the use of the word in speaking and writing; model the use of the word when you talk.



<https://help.hegartymaths.com/help/how-does-a-student-login>

Please see above parent support for logging into Hegarty for the first time.

## PRIMARY

### Minute (noun)

Period of time equal to sixty seconds or a sixtieth of an hour

**Although** (subordinating conjunction)  
meaning 'in spite of something'

## SECONDARY

### Diversity

The practice or quality of including or involving people from a range of different social and ethnic backgrounds and of different genders, sexual orientations, etc.

Synonyms:

Variety/Assortment/Medley/Range

Our Y7's have made a wonderful start to their high school journey, their attendance, attitude to learning (ATL) and endeavour is fantastic. They have settled incredibly well into The Grange routines and we are excited to see what the future holds for them.

Our Attendance and ATL league tables are well underway with 7MGR currently topping the ATL league table and 7PAI and 7PHL topping the attendance league table.

Position	Form	Attendance
1 <sup>st</sup>	7PHL	98.7
2 <sup>nd</sup>	7WHF	98.6
3 <sup>rd</sup>	7PAI	98.3
4 <sup>th</sup>	7COP	97.6
5 <sup>th</sup>	7MGR	97.4
6 <sup>th</sup>	7EIS	95.9
7 <sup>th</sup>	7SWI	83.2

Position	Form	Total ATL 1's
1 <sup>st</sup>	7MGR	149
2 <sup>nd</sup>	7EIS	133
3 <sup>rd</sup>	7PAI & 7COP	130
4 <sup>th</sup>	7PHL	120
5 <sup>th</sup>	7SWI	110
6 <sup>th</sup>	7WHF	103



THE GRANGE ACADEMY



ATL 1 Super Stars

- Yannis Sava
- Joel Burns
- Grace Kennedy
- Riley O'Callaghan
- Samuel Scarisbrick
- Leigh Edwards
- Kade Murray
- Kai Potter



We currently have a group of students who are going 'above and beyond' in their lessons and they are our ATL1 superstars. These students will be having breakfast provided for them as a treat for all their hard work and efforts.

Y7 are an absolute pleasure and both myself and Mrs Short are proud to call them our Year Group.

# ENRICHMENT

Thank you to all students, parents and carers who joined us at our Enrichment Fair.



## ENRICHMENT SECONDARY TIMETABLE HALF-TERM 1

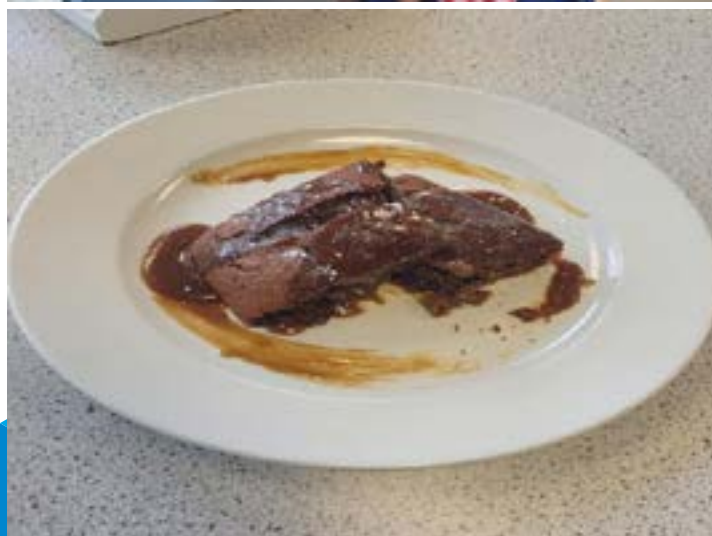


Monday	Tuesday	Wednesday	Thursday	Friday
<b>Football</b> Y7 & Y8 ALN	<b>Rugby League</b> Y7 & Y8 RIS	<b>Football</b> Y9 & Y10 ALN	<b>Band</b> Y7 - Y9 (invite only) FOD	<b>Board Games</b> Y7 - Y10 WLM
<b>Table Tennis</b> Y7 & Y8 GII	<b>Netball</b> Y7 - Y10 COP	<b>Gymnastics</b> Y7 - Y9 SWI	<b>Choir</b> Y5 - Y11 MR Galagher	
<b>Crystal Appreciation</b> Y7 - Y10 FOL	<b>Cookery Club</b> Y7 & Y8 KRI	<b>Basketball</b> Y7 - Y10 PAI	<b>Duke of Edinburgh Lunch</b> - Y11 MCR	
<b>Maths Quiz</b> Y7 RJD	<b>Table Tennis Lunch</b> - Y7 & Y8 LIG	<b>Gardening Club</b> Y7 - Y10 OCA		
<b>Geo Club</b> Y7 - Y9 Geography Staff	<b>Wellbeing</b> Y7 - Y10 GRC			
<b>Duke of Edinburgh</b> Innovation NGS	<b>Drama Club</b> Y7 - Y10 EVN			
	<b>Arts &amp; Crafts</b> Y7 - Y9 OUR			



# THE ROYAL NAVY

The Royal Navy facilitated a fantastic day of 'Ready, Steady, Cook' sessions for our year 11 Hospitality and Catering students. As well as supporting students with their learning, this enabled them to consider future career opportunities.



# FLU VACCINATION

Reception to Year 6 vaccines will take place on the 13th October 2022  
Year 7 to Year 9 will take place on the 1st December 2022

The Grange Academy



**Bridgewater  
Community Healthcare**  
NHS Foundation Trust

**Children and Families Directorate**  
School-aged Immunisation Team

September 2022

## Influenza (flu) vaccination

Dear Parent/Guardian

We will be offering the annual flu vaccine to all students in Reception to Year 9 this autumn and winter as part of the national NHS Childhood Flu Vaccination Programme.

Flu can be a very unpleasant illness, and for some it can cause serious complications. The vaccination programme is in place to protect your child against flu. It also helps to protect more vulnerable family and friends by preventing its spread.

### Important next steps:

Please take time to read the flu information available at:

<https://www.gov.uk/government/publications/flu-vaccination-leaflets-and-posters>.

If you have any questions, or if you think your child should have the injected vaccine instead of the nasal spray vaccine, please contact us.

1. As the flu vaccine will be delivered to your child in school, we also need you to complete the online consent. Consent can only be given by a parent/guardian/adult with parental responsibility\*.
2. If you are unable to complete the electronic consent form, please contact the relevant team for your child's school on the telephone number overleaf.

**The session for The Grange Academy for Reception to y6 pupils is on Thursday 13<sup>th</sup> October 2022**

The online consent form closes at 11am, two working days before the session.

1. Click on the following link: [www.BWimmunisations.co.uk](http://www.BWimmunisations.co.uk)
2. Enter and confirm your preferred email address – you will receive a confirmation email following submission of the consent form.
3. Enter your school code: **BW144617**
4. Complete and submit the consent form, indicating your choice of consent - please ensure you provide your child's registered address and GP.

If you do not want your child to have these vaccinations, please still complete the consent form where you will have the option to decline the vaccinations. If you do not indicate whether you want your child to be vaccinated or not and your child is in year 7 – 9 and requests the vaccination, it may be appropriate for your child to give their own consent. For a child to give their own consent, the immunisation nurse will assess your child's

\* Parental responsibility consent includes: Mother; father named on the birth certificate or married to the mother; adult granted parental responsibility by the courts; adult with delegated authority consent (given by the Local Authority when children are on a care order).

September 2022

Page 1 of 2

# FLU VACCINATION CONTINUED

Reception to Year 6 vaccines will take place on the 13th October 2022  
Year 7 to Year 9 will take place on the 1st December 2022

competency to consent considering what having the vaccination involves, their understanding of the benefits of receiving the vaccination and the risks of not having it.

When you have returned online consent, please contact the School-aged Immunisation Team if any of the following apply:

- Your child has had their asthma medication increased (including inhalers and/or steroid tablets)
- Your child is prescribed any new medication
- Your child is wheezy on the day or in the three days prior to the flu vaccination
- Your child receives their flu vaccination elsewhere (such as GP or chemist etc.)
- You change your mind about your child receiving/not receiving the vaccination

On the day of your child's vaccination in school, you will receive an email to confirm the vaccination was administered. Details about your child's vaccination will also be put on their health record and shared with their GP.

Further information, such as the planned dates of the vaccination in your child's school can be found on our NHS website, using this address: [www.tiny.cc/imm](http://www.tiny.cc/imm). You can also visit the website by scanning the QR code below with your smartphone or tablet. Our dedicated website also includes information about:

- How we use and protect your information and why we sometimes need to share your data
- The different school-aged vaccination programmes we deliver
- Patient information leaflets for the vaccines we use
- Updates to any planned delivery schedule we need to change at your child's school



Thank you for taking the time to read this important information. If you have any questions, please contact your local School-aged Immunisation Team using the details below.

Yours sincerely

**School-aged Immunisation Team**

**Halton Borough**

Tel: 0151 495 5066

Email:

[BCHFT.haltonimmsteam@nhs.net](mailto:BCHFT.haltonimmsteam@nhs.net)

**Warrington Borough**

Tel: 01925 946808

Email:

[BCHFT.warringtonimmsteam@nhs.net](mailto:BCHFT.warringtonimmsteam@nhs.net)

Our community shop is open all year, this is a free and confidential service. Please contact us on 01928 560660 or alternatively email [Info@thegrangeacademy.co.uk](mailto:Info@thegrangeacademy.co.uk).

# COMMUNITY SHOP

**SUPPORT**  
AT THE  
GRANGE  
ACADEMY

## HAMPERS



## FOOD STOCK



## UNIFORM





# SAFEGUARDING, EMOTIONAL WELLBEING AND MENTAL HEALTH

If you need to discuss any matter regarding your child, please feel free to contact us at school. We find that students achieve the best when there is open communication between home and school.

Your child's Form Tutor should be the first port of call, please feel free to speak to the relevant Progress Leader if you have any worries or concerns, or have any information that you would like to share as a reminder.



THE GRANGE ACADEMY



## Child Protection Concerns

# Are you concerned about a child?

### If you are concerned about a child:

Make a factual record of your concern (include day, date, time, other witnesses, concern and your signature).

### You must share your concerns without delay.



Miss Kenneway—DSL



Miss McPartland—DSL



Mrs Ireland



Mr Beavon



Miss Bate



Mrs Price

If you are unable to contact a member of the Safeguarding or Pastoral Team, please contact ICART between the hours of 09.00 - 17.00 on 0151 511 7722. Outside of these hours please contact the Emergency Duty Team on 0151 511 8200.