



THE  
GRANGE  
ACADEMY

ASPIRE FOR EXCELLENCE

# NEWSLETTER

DECEMBER 2022 ISSUE 04

A MESSAGE FROM THE PRINCIPAL

Dear Parents and Carers,

I am proud and privileged to have been appointed as the Principal at The Grange Academy and be part of the Wade Deacon Trust. The Governors and Trust Leaders have shared their ongoing commitment to excellence for the community. I am confident that, in partnership with you as parents, we can build on the schools many recent successes, achieving the very best for our young people.

I look forward to meeting with you formally or informally in the new year and to build relationships with you and your children based on respect, courtesy and trust. I am determined to ensure that in addition to the exceptional facilities here, we sustain a focused learning atmosphere where all children are encouraged and supported to grow and achieve well.

I have lots to share in my hopes and dreams for your children but for now I will pause to say, have a restful break across Christmas and see you in the new year.

Mr R Hicks  
Principal



MEMBER OF THE  
WADE DEACON TRUST

# ROAD SAFETY

## PARKING

You will have noticed that we are working with parents and carers to ensure the parking, especially in the taxi/disabled bays closest to the school, are safe for our most vulnerable children and I thank you for your cooperation in this matter. Please note these bays should only be used for the local authority taxi's that bring our resource base and SEND pupils to school and also those with a blue badge. We politely request that blue badge holders use the spaces available.

Additionally, we will be working with Halton Borough Council and the Police to tackle the ongoing issue with illegal parking, ensuring Latham Avenue and the surrounding roads are kept as clear as possible. The car park is open before and after school and there are usually spaces to park so your child(ren) can meet you in the car park or you can walk down to collect. Police will be on site in the upcoming weeks to enforce.

Please can I request that you do not park on the double yellow lines or obstruct the flow of traffic. Again, these requests are made to keep our children safe.

The bays on the left, as you drive into the car park - can I politely request this area is not used for parking or short stay, it is for **drop off / pick up only**.



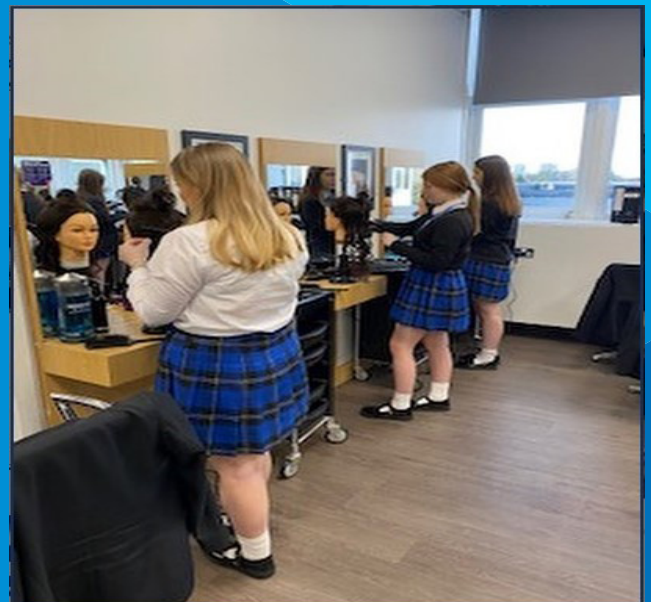
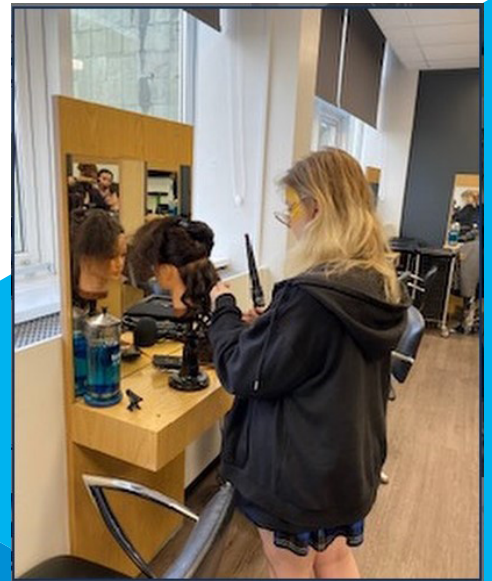
# ENRICHMENT

Eco Club and Art Club have paired up this half term in order to create Christmas decorations using recycled materials. Enabling the children to see how old plastic pots and cardboard boxes could be given a new lease of life! As a group we created wreaths, hanging reindeer decorations and our own baubles. The children and staff had lots of fun crafting.



# WIDER OPPORTUNITIES

Year 11 students had a fantastic time at the Trade Day at Riverside College. Students had a opportunity to see what college life would be like.



# CHRISTMAS BINGO AND CONCERT



Our community shop is open all year, this is a free and confidential service. Please contact us on 01928 560660 or alternatively email [Info@thegrangeacademy.co.uk](mailto:Info@thegrangeacademy.co.uk).

# COMMUNITY SHOP

## HAMPERS



SUPPORT  
AT THE  
GRANGE  
ACADEMY

## FOOD STOCK



## UNIFORM



# SAFEGUARDING, EMOTIONAL WELLBEING AND MENTAL HEALTH

If you need to discuss any matter regarding your child, please feel free to contact us at school. We find that students achieve the best when there is open communication between home and school. Your child's Form Tutor should be the first port of call, please feel free to speak to the relevant Progress Leader if you have any worries or concerns, or have any information that you would like to share as a reminder.

## SAFEGUARDING TEAM

### Are you concerned about a child?

**If you are concerned about a child:**

Make a factual record of your concern (include day, date, time, other witnesses, concern and your signature).

**You must share your concerns without delay.**



Miss Kenneway—DSL



Miss McPartland—DSL



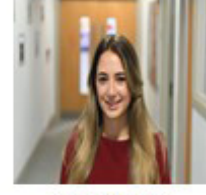
Mrs Ireland



Mr Beavon



Miss Bate



Miss Holcroft

If you are unable to contact a member of the Safeguarding or Pastoral Team, please contact ICART between the hours of 09.00 - 17.00 on 0151 511 7722. Outside of these hours please contact the Emergency Duty Team on 0151 511 8200.

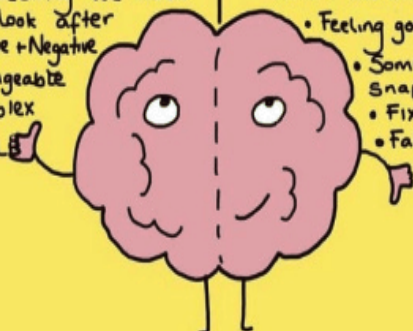
## MENTAL HEALTH

### IS...

- Important
- Something everyone has
- Intrinsicly linked to (+ probably inseparable from) physical health
- On a continuum
- Worth making time for
- Part of being human
- Something we need to look after
- Positive + Negative
- Changeable
- Complex
- Real

### ISN'T...

- A sign of weakness
- Shameful
- All in your mind
- Always something negative
- Something you decide to have only when it feels broken
- An interchangeable term with mental illness
- Feeling good all the time
- Something you can snap out of
- Fixed
- Fake news



## WELLBEING QUOTE

It is the dream that gives us the journey...but the journey that gives us the joy!

## WORD OF THE WEEK

Each week, we look at a high-frequency, useful word (which may be difficult to interpret) and explore the definition, sounds, spelling, word-families, grammar and history surrounding it.

### How you can help:

Encourage the use of the word in speaking and writing; model the use of the word when you talk.

## EMOJI BOOKS

Can you guess the name of this well known children's book from this emoji?



## PRIMARY

### Cycle (verb/noun)

noun - a series of events that are regularly repeated in the same order.

verb - move in or follow a regular repeated sequence of events/ride a bike

### Continent (noun)

any of the world's main continuous expanses of land

## SECONDARY

### Project

An individual or collaborative enterprise that is carefully planned to achieve a particular aim

Synonyms:

Extend/ Jut/ Protrude

# UPCOMING DATES AND EVENTS

- SCHOOL CLOSURES FOR CHRISTMAS**

**21ST DECEMBER**

- SCHOOL RE-OPENS**

**4TH JANUARY**

- BRILLIANT CLUB LAUNCH EVENT**

**11TH JANUARY**

- KINGSWOOD RESIDENTIAL Y5**

**15TH/16TH/17TH FEBRUARY**





# FREE ACTIVITIES OVER THE CHRISTMAS PERIOD

There are a range of free activities taking place over the Christmas period that students can get involved in.



## HAF Christmas Programme

 Victoria Park Widnes

 22nd & 23rd December 2022

 1-5pm

 Bubble Football  
Facepainting  
Festive arts and crafts  
Marshmallow s'mores on campfire

 Festive Food, dessert and hot chocolate provided



For young people age 8-16 who are eligible for Free School Meals and other vulnerable groups of young people.

**SEND Key**  
**S F**

 [REGISTER HERE](#)  



## HAF Christmas Programme

 Runcorn Ski Centre  
Town Park

 22nd December 2022

 1-5pm

 Free taster ski session on the slopes \*  
Facepainting  
Festive arts and crafts  
Marshmallow s'mores on campfire

 Festive food, dessert and hot chocolate provided



\*Under 16's need a parent to sign a waiver to partake in activity

For young people age 8-16 who are eligible for Free School Meals and other vulnerable groups of young people.

**SEND Key**  
**S F**

 [REGISTER HERE](#)  



## HAF Christmas Programme

 Windmill Hill Westwood/  
Southwood

 23rd December 2022

 1-5pm

 Crazy Golf  
Festive arts and crafts  
Marshmallow s'mores on campfire  
Facepainting

 Festive food, dessert and hot chocolate provided



For young people age 8-16 who are eligible for Free School Meals and other vulnerable groups of young people.

**SEND Key**  
**S F**

 [REGISTER HERE](#)  