



# NEWSLETTER

## A MESSAGE FROM THE PRINCIPAL



Hello everyone. I appreciate you taking the time to read our Newsletter. This month's issue is once again packed with some wonderful extra-curricular events to celebrate. Staff were 'beyond excited' to welcome back Stone Age people. Our primary age students were able to experience a prehistoric workshop as they set up camp to live on site for two days.

Other highlights include the Geography fieldtrip to Loggerheads Country Park for a river study, and the careers fair was a huge success with over 40 external providers in attendance and full engagement from our community. The students made an excellent start to their academic year and thank you to all parents for the immaculate uniform standards that were set. It is valued that you support us in maintaining such high standards throughout the year.

Our big collective challenge is attendance. This is well documented through national press and media. Thank you to all parents who have taken the time to complete the recent attendance survey. Your responses are genuinely able to shape our practice in encouraging more students through the door and attend with regularity as a normal and expected routine that helps shape young people's futures. Good attendance is a strong indicator of success.

We are reaching out to our local cadets; land, sea and air to encourage young people to wear their uniform on Friday 10th November to commemorate Remembrance Day. We can look forward to that after a well-deserved break for staff and students this half-term

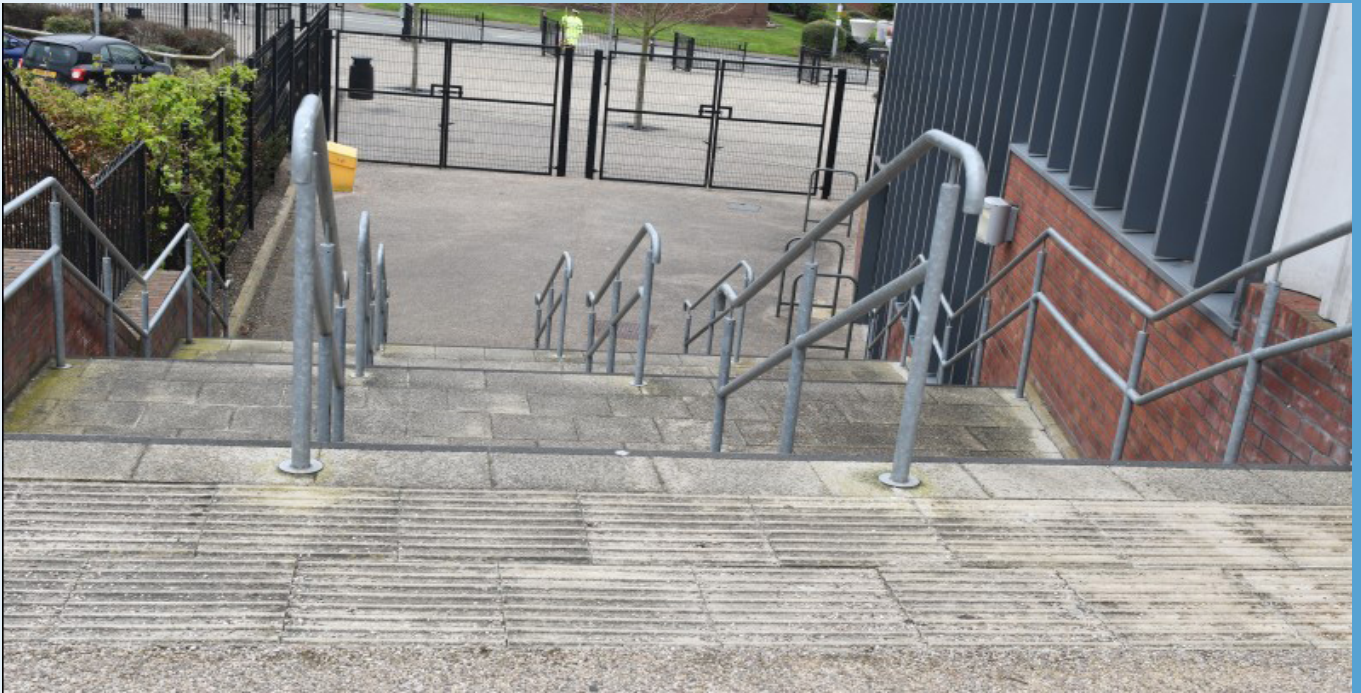
Thank you, parents and carers, for your ongoing support. We are better when we work together.

Warm regards

R. Hicks  
Principal



# SECONDARY ENTRY AND EXIT



- Entry and exit into the school will be through the side entrance.
- Uniform will be checked at the door with Blue slip issued if required. (2 days to rectify any issue)
- Gates to the side entrance will be closed at 8:30am, after this time all late students must enter through the front main entrance.
- Late detention will take place during breaktime.

## Primary

**Start of the Day is 8:40am**

Registration 8:40am - 8:50am

Period 1 - 8:50am - 9:50am

Break 9:50am - 10:05am

Period 2 - 10:05am - 11:05am

Period 3 - 11:05am - 12:50pm

Lunch - 11:35am - 12:50pm

Period 4 - 12:50pm - 13:50pm

Period 5 - 13:50pm - 14:50pm

**Finish of the day is 14:50pm**

## Secondary

**Start of the Day is 8:30am**

Registration 8:30am - 8:50am

Period 1 - 8:50am - 9:50am

Period 2 - 9:50am - 10:50am

Break 10:50am - 11:05am

Period 3 - 11:05am - 12:05pm

Period 4 - 12:05pm - 13:05pm

Lunch - 13:05pm - 13:35pm

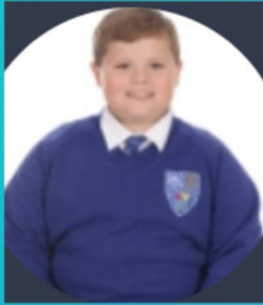
Period 5 - 13:35pm - 14:35pm

**Finish of the day is 14:35pm**

# Primary Prefects

Congratulations to our Year 6 Prefect Team who will be supporting children across the primary phase of learning throughout the year.

## Introducing our Year 6 Head Prefects



Arthur



Alyssa



Isobel



Alex

## Introducing our Year 6 Prefects



Scarlett



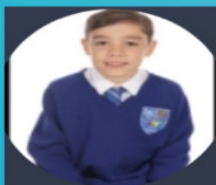
Millie



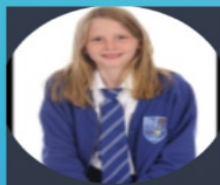
Callan



Anayah



Logan



Robyn



Bobby



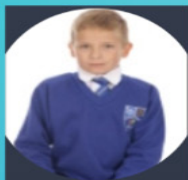
Jorgie

## Introducing our Message Wallet Teams

### Upstairs Wallet Team



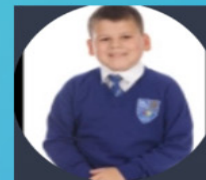
Connor



Lincoln



Charlie



Jaimie

### Downstairs Wallet Team



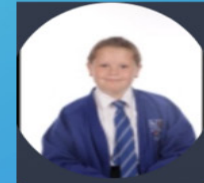
Bella



Bailey Rae



Chloe



Chloe

## School Choir

The school choir had their first performance of the year last week at Open Evening. Their performance, accompanied by Mr Beavon on piano, opened the evening in front of parent's, carers and prospective students before Mr Hicks welcomed them all with his speech.

A very successful performance which resulted in a huge round of applause, and a number of parent's coming up to Mrs Foster throughout the night, praising them.

The atmosphere from the choir when they came off stage was amazing, and to quote a few students, "we are buzzing!"

The school band, led by Mr Foster was also a very positive hit of the night and created a huge amount of interest. The students were brilliant and thoroughly enjoyed being rockstars gaining enormous compliments from their many, new fans!

A number of our wonderful soloists performed at the top of the stairs throughout the night, greeting people as they made their way up to science, art and music. The number of people who stopped, watched, listened and praised them was wonderful.

Well done all who participated, Mrs Foster and Mr Beavon are very proud of you all.

## Stone Age

Our children were extremely lucky to experience a prehistoric workshop! A spectacular 'Stone Age' Cave set up on the school grounds over two days.

The children across KS2 got to understand life in the stone age and the skills and abilities it took to survive.



## Geography

Year 9 have started the academic year by studying the topic of weather and climate in Geography. As part of this our students have been investigating small microclimates around the school site, to see what elements of our school building impact the likes of temperature and wind speed.



## Geography Trip

On Tuesday 3rd October two classes of year 11 GCSE Geography students visited Loggerheads Country Park to carry out their fieldwork to investigate how characteristics such as width, depth and velocity of the river Alyn changed at various points. The students got hands on with the methods despite the river being a little deeper than expected due to storms the weekend before and the Geography Department were really pleased with the efforts of our year 11!



## Enrichment

The Year 8 girls' netball team attended their first tournament of the year on 5th October, with many new players on the team it was excellent to see them working together and beginning to gel as a team. The girls finished 5th overall.

The Year 9 girls' netball team attended their first tournament of the year on 12th October, the girls put in a strong performance and finished 3rd overall. A great effort from all involved in both teams. Well done girls!



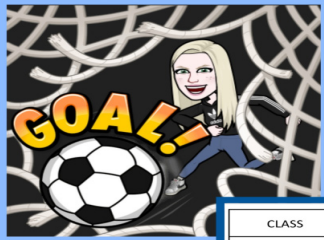
# Careers Fair

Year 11 students enjoyed the opportunity to introduce themselves to the world of careers at our annual careers fair. We had over 40 external providers attend who educated our students in a wide range of career pathways available to them. Year 11 parents/carers also attend after school and appreciated the opportunity to be involved in the discussions about the next steps for students at The Grange Academy. Keep up to date with careers events on the school website.



# Maths Homework Timetables

ASPIRE FOR EXCELLENCE




## Miss Ayrton HOMEWORK TIMETABLE

CLASS	HOMEWORK DAY SET	HOMEWORK DAY DUE
7N4	WED	WED
8N1	WED	WED
9N3	WED	WED
11M4	WED	WED

Sparx Maths

THEGRANGEACADEMY.CO.UK

ASPIRE FOR EXCELLENCE




## MRS CULLEN HOMEWORK DAYS

CLASS	HOMEWORK DAY SET	HOMEWORK DAY DUE
8N6	MON	MON
9N6	MON	MON
10M5	MON	MON
11M6	MON	MON

Sparx Maths

THEGRANGEACADEMY.CO.UK

ASPIRE FOR EXCELLENCE




## MRS JONES HOMEWORK DAYS

CLASS	HOMEWORK DAY SET	HOMEWORK DAY DUE
7N1	THURS	THURS

Sparx Maths

THEGRANGEACADEMY.CO.UK

ASPIRE FOR EXCELLENCE




## MRS BIBBY HOMEWORK DAYS

CLASS	HOMEWORK DAY SET	HOMEWORK DAY DUE
9N4	MON	MON
10M3	MON	MON
11M3	FRI	FRI

Sparx Maths

THEGRANGEACADEMY.CO.UK

ASPIRE FOR EXCELLENCE




## MR MCCULLOUGH HOMEWORK DAYS

CLASS	HOMEWORK DAY SET	HOMEWORK DAY DUE
7N5	WED	WED
8N3	THURS	THURS
8N5	FRI	FRI
10M1	FRI	FRI
11M5	WED	WED

Sparx Maths

THEGRANGEACADEMY.CO.UK

ASPIRE FOR EXCELLENCE




## MR GILLIN HOMEWORK DAYS

CLASS	HOMEWORK DAY SET	HOMEWORK DAY DUE
7N3	WED	WED
7N6	TUES	TUES
9N1	TUES	TUES
9N7	TUES	TUES
10M2	WED	WED

Sparx Maths

THEGRANGEACADEMY.CO.UK

ASPIRE FOR EXCELLENCE



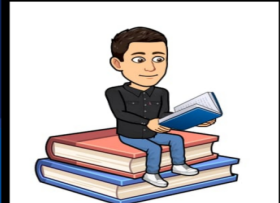
## MRS ROBINSON HOMEWORK DAYS

CLASS	HOMEWORK DAY SET	HOMEWORK DAY DUE
8N2	MON	MON
9N2	MON	MON
10M4	MON	MON
11M2	MON	MON

Sparx Maths

THEGRANGEACADEMY.CO.UK

ASPIRE FOR EXCELLENCE



## MR WHITFIELD HOMEWORK DAYS

CLASS	HOMEWORK DAY SET	HOMEWORK DAY DUE
7N2	TUE	TUE
8N4	WED	WED
9N5	THU	THU
11M1	FRI	FRI

Sparx Maths

THEGRANGEACADEMY.CO.UK



## WORD OF THE WEEK

Each week, we look at a high-frequency, useful word (which may be difficult to interpret) and explore the definition, sounds, spelling, word-families, grammar and history surrounding it.

### How you can help:

Encourage the use of the word in speaking and writing; model the use of the word when you talk.

## EMOJI BOOKS

Can you guess the name of this well known children's book from this emoji?



## PRIMARY

### Command (Verb)

When someone says a sentence that gives an instruction.. this always includes an imperative verb, that is usually at the beginning of the sentence.

### Fragile (Adjective)

Easily broken or damaged

## SECONDARY

### Metacognition

Awareness and understanding of one's own thought processes.

Synonyms:

Comprehension/ Awareness/ Thoughts/ Self-perception



As our car park gets extremely busy during drop off and pick up times, we ask parents/carers/visitors to ensure that they do not block in or obstruct other vehicles and do not park on the zig-zag markings on Latham Avenue.

Disabled bays are allocated for parents/students who have limited mobility and must display a blue badge.

Please be observant of pedestrians and also remind children of the importance of road safety - using zebra crossings correctly, checking before they cross the road etc. We appreciate your support in keeping all members of our community safe.

## UPCOMING DATES AND EVENTS

- **Y7 PHOTOGRAPHS**  
23RD OCTOBER
- **BREAK UP FOR HALF TERM**  
26TH OCTOBER
- **RETURN TO SCHOOL**  
6TH NOVEMBER
- **PRIMARY PARENTS EVENING**  
16TH NOVEMBER
- **PRIMARY PARENTS EVENING**  
23RD NOVEMBER
- **RESOURCE BASE PARENTS EVENING**  
23RD NOVEMBER



Our community shop is open all year, this is a free and confidential service. Please contact us on 01928 560660 or alternatively you can email [Info@thegrangeacademy.co.uk](mailto:Info@thegrangeacademy.co.uk).

# THEGRANGEACADEMY.CO.UK

## COMMUNITY SHOP



# SAFEGUARDING, EMOTIONAL WELLBEING AND MENTAL HEALTH

If you need to discuss any matter regarding your child, please feel free to contact us at school.

We find that students achieve the best when there is open communication between home and school.

Your child's Form Tutor should be the first port of call, please feel free to speak to the relevant Progress Leader if you have any worries or concerns, or have any information that you would like to share as a reminder.



THE  
GRANGE ACADEMY

Child Protection Concerns



## Are you concerned about a child?

**If you are concerned about a child:**

Make a factual record of your concern (include day, date, time, other witnesses, concern and your signature).

**You must share your concerns without delay.**



Miss Kenneyway —DSL



Miss McPartland—DSL



Miss Holcroft



Miss Speed



Mr Beavon



Mrs Boyd-Rugen



Mr Hutton



Mrs Ireland



Miss Stockton

If you are unable to contact a member of the Safeguarding or Pastoral Team, please contact iCART between the hours of 09.00 - 17.00 on 0151 511 7722.

Outside of these hours please contact the Emergency Duty Team on 0151 511 8200.

# SAFEGUARDING, EMOTIONAL WELLBEING AND MENTAL HEALTH

Have you noticed changes in your child’s behaviour?

Everyone can often feel low, angry or worried at times. But if these changes are lasting a long time or are greatly affecting your child, it might be time to seek some guidance.

There are things you can look out for that might suggest your child is worried about something:

- Significant changes in how they behave and act
- Problems sleeping such as getting to sleep, waking often and being tired all the time
- Being withdrawn or avoiding certain situations or people
- Not wanting to do things they usually enjoy
- Hurting themselves on purpose to help cope with difficult feelings or neglecting themselves

Before you seek help you might want to think about whether your child is getting everything they need to be healthy such as;

- A healthy balanced diet including plenty of water
- Enough sleep
- Plenty of physical activity
- A home where they feel safe and loved
- Friends, hobbies and interests

There are lots of places you can get advice and help to support you and your child.

If your child is in a mental health crisis you can contact the local mental health crisis line for free on 0800 051 1508. Available 24/7 and can also support adults who need urgent mental health support



Young Minds provide a FREE Parents helpline and web chat providing confidential expert advice write up You can call for free on 0808 802 5544 from 9:30am - 4pm, Monday – Friday



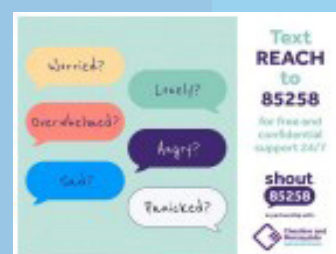
Speak to a School Nurse or Health Visitor via Chat Health text service. The number will operate between 9am and 5pm Mon-Fri and messages will receive a response within 24 hours



ADDvanced solutions support children, young people and families living with neurodevelopmental conditions. You don't need a diagnosis to access support. Email: info@addvancedsolutions.co.uk or Tel: 0151 486 1788



Feeling anxious, worried or overwhelmed? SHOUT provide free confidential support via text 24 hours a day 7 days a week. https://giveusashout.org/ Text REACH to 85258



Kooth is a free anonymous, confidential, safe, online wellbeing service, offering professional support, information and forums for young people aged 11-25. Access to counsellors 365 days a year available from 12 noon to 10pm Mon-Fri



18 and under? Childline provide support 24 hours a day 7 days a week via telephone, email and online web chat with a counsellor. Calls are free from mobiles and landlines and won't show on your bill Call: 0800 1111 https://www.childline.org.uk/get-support



The local Mental Health Info Point has details of support available for a variety of worries and concerns as well as info on how to look after your mental health and wellbeing. Scan the QR code on your smartphone or visit www.halton.gov.uk/mhinfopoint



## PARENT/ CARER INFORMATION

### COMMUNITY SHOP

We have received a large donation of warm winter coats into our community shop. If you would like a coat for your child please contact the school with the size/gender required, or call into our reception and staff will be happy to help. Our community shop is a free and confidential service, we also have a few lunch boxes, a pram and a high chair available along with our school uniform donations and food hampers.

If you have any PE kits, school ties, secondary skirts and blazers you would like to donate, please hand them into our reception. We are now fully stocked for winter coats and primary uniform.

Thank you

**Polite notice to all parents/ carers,  
Please refrain for smoking/ vaping on the school plaza.**

Thank you



## RUNCORN FAMILY HUBS LAUNCH EVENT



WEDNESDAY 25 OCTOBER

TIMES: 9.30am – 2.00pm (first hour will be quiet time for families)  
11am (formal celebration ceremony)

WHERE: Brookvale Family Hub, Woodhatch Road,  
Brookvale, Runcorn WA7 6BJ



Join us to celebrate and find out what Family Hubs mean for families in Runcorn.



- Fun day with free activities for children • Free lunch • Face painter • Arts, crafts and music
- Storytime, reading corner with puppets • Petting farm • Swap shop • Treasure hunt • Giveaways and much more



Family Hubs are here in your community with everything families might need, from starting a family to helping young people find a career. No need to book just come along!

Our Primary Gardening Club have been selected to receive a Tesco Community Grant. How much they receive depends on how many 'blue token votes' we get over the next 3 months. If you, or a family member is visiting Widnes Tesco and receive a blue token, please use it to vote for us on the way out of the store.

### SUPPORT THE PRIMARY GARDENING CLUB

Look out for the **blue token voting system** at Widnes Tesco from next Monday until January to **help us win** a grant to support the club



SUPPORT AT THE GRANGE ACADEMY

ASPIRE FOR EXCELLENCE



# BOYDELL'S

*Your local Uniform shop*

17-19 Victoria Road, Widnes, Cheshire WA8 0PU Tel: 0151 424 3257  
 email: [shop@boydellsport.com](mailto:shop@boydellsport.com) Website: [www.boydellswidnes.co.uk](http://www.boydellswidnes.co.uk)

## The Grange Academy Price List May 2023 **Primary**

Uniform	Cost
Crew Neck Sweatshirt KS1	£12.00
Cardigan	£13.00
Tie	£5.00
V Neck Sweatshirt KS2	£12.00
PE Tshirt	£6.00
PE Shorts	£6.00
PE Bag	£5.00
20 x Iron on Name Labels	£4.00
Bookbag	£10.00



School uniform is available all year round.

**Please contact the shop with any queries**

**Shop Opening  
Times**

**Monday to Friday - 9:00am to 5:00pm  
Saturday - 9am to 12noon**

### AUGUST LONGER OPENING HOURS

**Saturday 9am to 5pm  
Sunday 10am to 4pm  
10am to 4pm August Bank Holiday**



# BOYDELL'S

*Your local Uniform shop*

17-19 Victoria Road, Widnes, Cheshire WA8 0PU Tel: 0151 424 3257  
 email: [shop@boydellsport.com](mailto:shop@boydellsport.com) Website: [www.boydellswidnes.co.uk](http://www.boydellswidnes.co.uk)

## The Grange Academy Uniform Price List May 2023 Senior

Size	Uniform	Price
Chest up to 36	Bespoke Blazer with embroidered badge	£37.00
Chest from 38	Bespoke Blazer with embroidered badge	£43.00
Longer Length	Bespoke Blazer with embroidered badge	£43.00
up to 32" waist 20" drop	Bespoke Tartan Skirt	£27.00
From 34" waist 20" drop	Bespoke Tartan Skirt	£28.00
All sizes 22" drop	Bespoke Tartan Skirt	£32.00
<b>extra charge for special order size skirts</b>		
All sizes	Black Trousers	£25.00
One Size	Tie	£8.00
All sizes	White shirts twin pack	£18.00
All sizes	Black Plain V Neck Cotton Jumper	£18.00
<b>Size</b>	<b>PE Kit - Boys &amp; Girls</b>	
All sizes	Poloshirt	£16.00
All sizes	Shorts	£12.00
All Sizes	Socks	£6.00
All sizes	Outdoor Top	£25.00
All sizes	Outdoor Trackpants	£15.00
<b>Size</b>	<b>PE Kit -Boys</b>	
	Rugby Top	£25.00
<b>Size</b>	<b>PE Kit -Girls</b>	
All sizes	Skort	£15.00
All sizes	Leggings	£15.00



### Shop Opening Times:

Monday to Friday - 9:00am to 5:00pm

Saturday - 9am to 12noon

**AUGUST LONGER OPENING HOURS**

Saturday 9am to 5pm

Sunday 10am to 4pm

9am To 4pm August Bank Holiday